

Technical Bulletin



Condition

Radio, AM Station Buzz/Static

Radio static/buzz when on AM station with headlamps switched ON. Once brake pedal is depressed, the static/buzz goes away.

91 06 12 Dec. 13, 2006, 2012910

Model(s)	Year	Eng. Code	Trans. Code	VIN Range From	VIN Range To
Passat (Sedan)	2006	All	All	3C_6P000001	3C_6P157667
Passat (Sedan)	2007	All	All	3C_7E000001	3C_7E040493

Technical Background

Hex and bit long coding not correct in Electronic central electrics.

Production Solution

Improved long coding after VIN: 3C_6P157667 or 3C_7E040493.

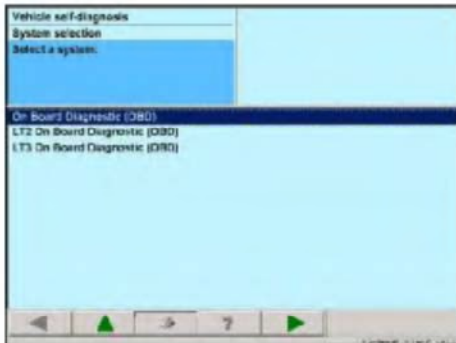
Service

1. Install an approved VW battery charger.
2. Connect VAS 5051/5052 scan tool.

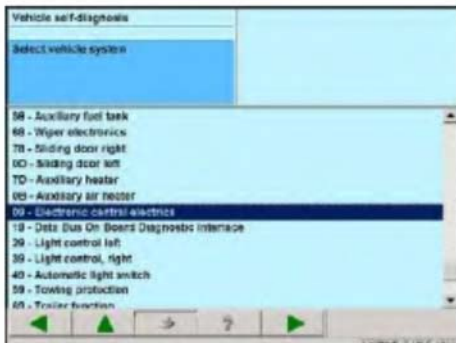


3. Select "Vehicle Self Diagnosis".

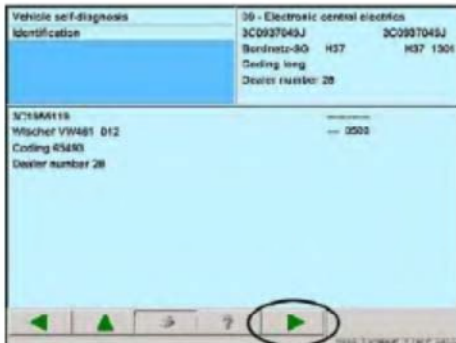
Technical Bulletin



4. Select "On Board Diagnostic (OBD)".

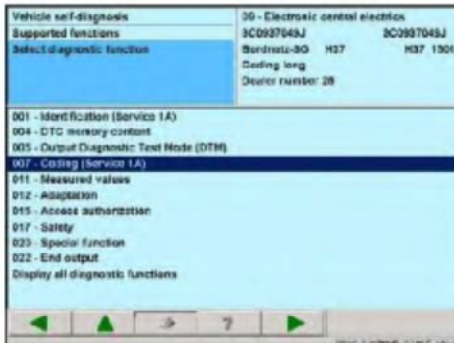


5. Select "09 - Electronic central electrics".

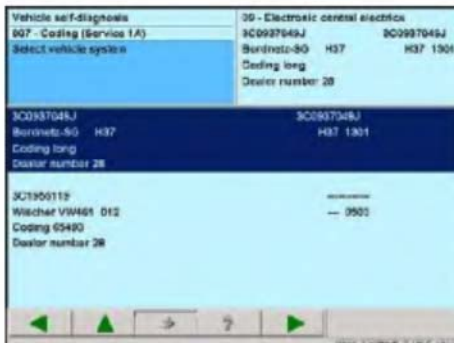


6. Select forward arrow.

Technical Bulletin

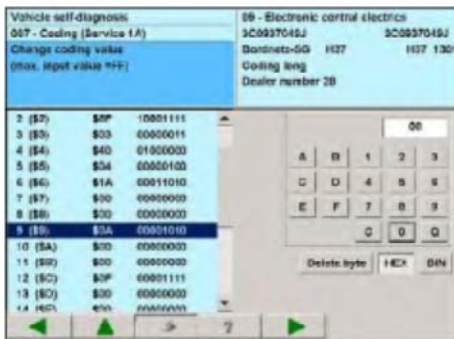


7. Select "007 - Coding (Service 1A)".



8. Select "Bordnetz" and then forward arrow.

9. Print or copy the original long coding.



10.

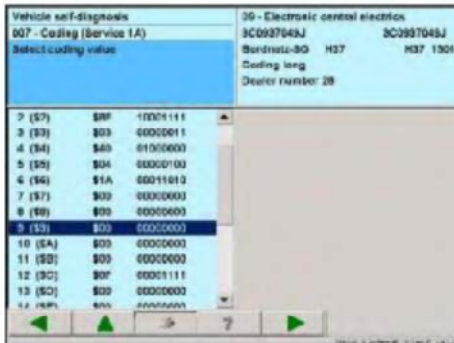
- Locate Byte 09 and highlight it.
- Select forward arrow key.
- Select the HEX key on the keyboard.
- Use the keyboard to change HEX number from 0A to 00.
- Select Q than select forward arrow.



Tip:

A note will come up "should the coding definitely be performed". Select Yes.

Technical Bulletin



11. Select back arrow key back out then recheck the long coding to verify it saved.
See table below.

	HEX	BIT
Old code was	0A	00001010
New code will be	00	00000000

Warranty

When procedure applies to vehicles within the New Vehicle Limited Warranty, use the following:	
Claim Type:	W2
Part Identifier:	9130
Damage Code:	9130 39 __ __ * 1
Labor Operation:	91302542 = 20 TU
Diagnostic Time:	No Additional Diagnostic Time Allowed
Claim Comment: Input "As per Technical Bulletin 2012910" in comment section of Warranty Claim.	

* Code per warranty vendor code policy.

Required Parts and Tools

No Special Tools required.

No Special Parts required. Always see ETKA for the latest part(s) information.