

# Technical Bulletin



Model(s)	Year	Eng. Code	Trans. Code	VIN Range From	VIN Range To
Passat, Passat Wagon	2007 - 2008	All	All	All	All
Rabbit, GTI	2007 - 2008	All	All	All	All
Eos	2007 - 2008	All	All	All	All
Touareg	2007 - 2008	All	All	All	All
New Beetle, New Beetle Convertible	2007 - 2008	All	All	All	All
Jetta	2007 - 2008	All	All	All	All

## Condition

00 07 06 Apr. 11, 2007 2014598

PDI - Radio, Anti-Theft Radio Security Code Not Equipped

New vehicles will no longer be equipped with radio security codes from factory.



Tip:

Obtaining radio security code is considered part of the Perfect Delivery Inspection (PDI) process.

## Technical Background

Radio security codes must be obtained using VAS 5051 or VAS 5052 through an on-line connection with GeKo.



Tip:

GeKo is a German acronym from the term Geheimnis und Komponentenschutz. In English this means Security and Component Protection. GeKo is the name used for the Security and Component Protection process.

## Production Solution

Starting vehicle model year 2007.

# Technical Bulletin



## Service

### Requirements

- VAS 5051 or VAS 5052 equipped with Ethernet card and security certificate, connected to Dealer's Local Area Network (LAN) and high speed Internet access.
- Vehicle Battery MUST be fully charged and maintained during this procedure.
- Operator must have a valid GeKo user ID and password.

GeKo ID and Password (requires Service Manager authorization). To obtain a GeKo ID and Password, see instructions on the "GeKo ID Request Form".

Your Service Manager can access the "GeKo ID Request Form" by selecting "All Service Reports & Publications" on [www.vwhub.com](http://www.vwhub.com).

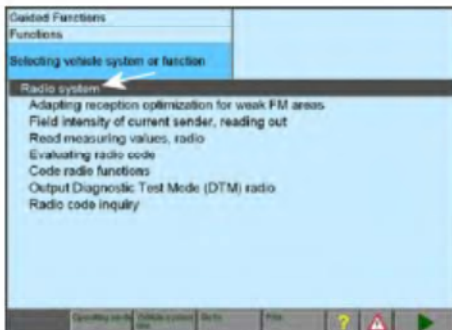


Tip:

Follow all text prompts as indicated on each VAS 5051 or VAS 5052 screen.

### Obtaining Radio Code

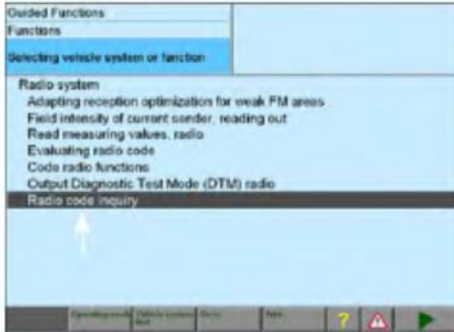
With the VAS 5051 or VAS 5052 connected to the vehicle:



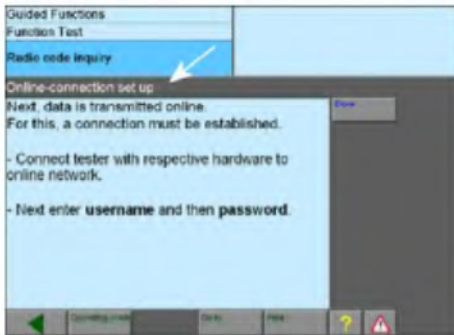
- Switch ignition ON.
- From Start-up screen, select "Guided Function mode".
- Select brand "Volkswagen".
- Select appropriate vehicle.
- Select "Radio system", -arrow-.



# Technical Bulletin



- Select "Radio code inquiry", -arrow-.



- Ensure VAS 5051 or VAS 5052 is connected for on-line communication, -arrow-.

Once communication is established:

- Enter GeKo ID and password.

The VIN information and radio serial number will be identified.



Tip:

Touareg vehicles, the VIN will have to be manually entered.

Jetta, New Beetle and New Beetle Convertible, the radio serial code must be manually read in address word 56, MVB 81, and then manually entered.

A radio code will be generated.

- Input generated radio code into radio.

## Technical Support



Tip:

The following technical support contacts are for VW dealership personnel only.

For Radio Code questions or GeKo connectivity, contact the VW Support Center at 1 (866) 892-3375 (press option 2 for VW dealers, then press option 4 for Service Related Application Support).

## Warranty

Information only.



# Technical Bulletin



---

## Required Parts and Tools

No Special Tools required.

No Special Parts required. Always see Parts Dept. for the latest part(s) information.

## Additional Information

All part and service references provided in this Technical Bulletin are subject to change and/or removal. Always check with your Parts Dept. and Repair Manuals for the latest information.