

Technical Bulletin



Model(s)	Year	Eng. Code	Trans. Code	VIN Range From	VIN Range To
Passat	2006	All	All	3C_6E000001	3C_6E200114*
Passat	2006	All	All	3C_6P000001	3C_6P182209*
Passat Wagon	2007	All	All	3C_7E000001	3C_7E007599*
*see VIN range descriptions below					

Condition

94 07 01 April 24, 2007 2014428

Parking Indicator, Sounds Off with No Obstacle

The parking assistance issues warning sounds for both the front and/or rear of vehicle with no obstacle in range.

Technical Background

Water intrusion into sensor holders causing corroded plug contacts and sensor electrical pins resulting in acoustic feed back in the attachment area of sensor(s)

Production Solution

1. Create drain in grille sensor holders before:

Sedan - 3C_6E186600

Sedan - 3C_6P173160

Wagon - 3C_7E006880

2. Install protective caps for all sensors before:

Sedan - 3C_6E200115

Sedan - 3C_6P178304

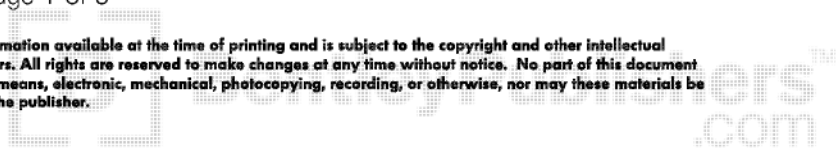
Wagon - 3C_7E007600

3. Install new sensors with part No. 3C0919275K-2ZZ (center front grille) and 3C0919275L-GRU before:

Sedan - 3C_6E194363

Sedan - 3C_6P182210

Wagon - 3C_7E007350



Technical Bulletin



Service

Front Parking Aid Sensor Procedure

- Switch Ignition OFF and place key on seat.
- Remove front grille and front bumper cover, see Repair Manual Group 63 Bumper in ElsaWeb.
- Disconnect parking aid sensors by gently separating parking aid sensor retaining tabs and sliding sensor out of retainer.



- Inspect sensor terminals and wiring harness connector terminals of all sensors (front and rear) for corrosion, clean as necessary.

If corrosion is too severe:

- Replace sensor, wiring harness connector and terminals.



! Note:

Pay close attention to the positioning of the sensors and their associated index number. Sensors of the same index number **MUST** be placed back into their original position.

- Inspect and record index numbers of all sensors:

Replace any sensor with an index letter -arrow- below " K" -front bumper center sensor- and " L" -front bumper outer sensor and rear bumper sensors-, see Repair Manual Group 94 Lights, lamps, switches outside, Parking aid.

Sensors with an index of " K" and " L" :

- Replace only the sensor with the fault, see Repair Manual Group 94 Lights, lamps, switches outside, Parking aid.

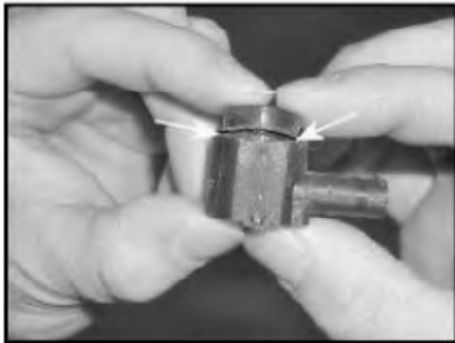
i Tip:

ALL sensors must have a new protective cap installed from Kit #3C0998277

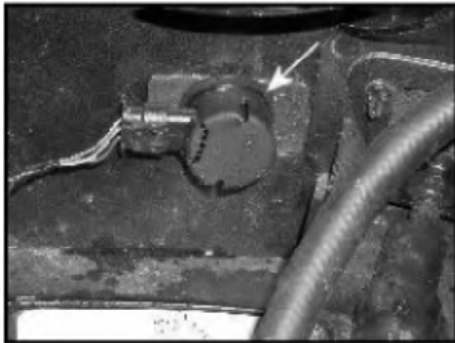
Technical Bulletin



- Place grille on a clean and protective surface.
- Remove parking assist sensor from retainer.
- Using a 3mm (3/32) drill, carefully drill a couple of drain holes into the parking aid sensor retainer where shown. ONLY the sensor retainers mounted to the grille required drain holes.

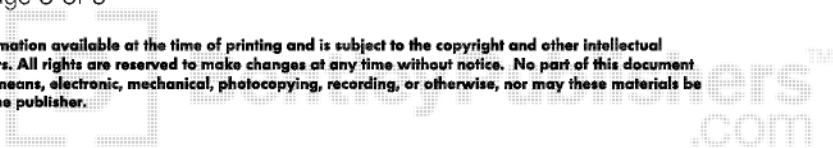


- Ensure proper positioning of parking aid sensor seal on sensor. Flat surface of seal must seat on sensor.



- Install sensor into retainer and listen for an audible click.
- Place protective cap over sensor and secure with tie strap from kit Part No. 3C0998277 as shown.

- Inspect and/or replace front bumper cover parking aid sensors, see Repair Manual Group 94 Lights, lamps, switches outside, Parking aid. Install protective caps from Kit Part No. 3C0998277.



Technical Bulletin



Rear Parking Aid Sensor Procedure

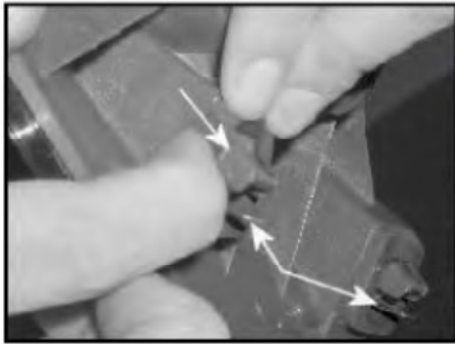
 **Note:**

Care must be taken when removing rear tail lamp assemblies from the wagon. Failure to do so will result in damage to tail lamp assembly and spring clamps.

Rear Tail Lamp Removal, Wagon Only



• Carefully remove snap in reflector next to tail lamp assembly using removal wedge VAS 3409 and remove tail lamp fastener.



 **Note:**

The tail lamp housing is retained to the rear fender by spring clips -lower arrows-. The tail lamp housing can be easily damaged, causing tail lamp replacement, if removed improperly.

There are grooves molded into the lamp housing -upper arrow- that fit into the rear fender. The spring clips -lower arrows- provide the necessary tension to retain the tail lamp housing.

Technical Bulletin



- Using the heel of your hand from the rear, and the tips of the fingers of your other hand between the rear fender and the lamp assembly (removal wedge VAS 3409 may also be used), apply slight diagonal pressure (heel of hand toward tips of fingers). This will allow the tail lamp spring clips to disengage from the fender. While using finger tips wedged between the fender and lamp assembly, pull tail lamp assembly directly rearward to remove.

 **Note:**

DO NOT wiggle, twist or tug the tail lamp assembly once the retaining fastener is removed from beneath the reflector.

- Remove rear bumper cover, see Repair Manual Group 63-Bumper.
- Inspect and/or replace rear bumper cover parking aid sensors, see Repair Manual Group 94 Lights, lamps, switches outside, Parking aid. Install protective caps from Kit Part No. 3C0998277 .

 **Tip:**

It is recommended to use 1001- Compiling Services prompt to clear faults stored in control modules.

Reset readiness code.

Technical Bulletin



Warranty

When procedure applies to vehicles within the New Vehicle Limited Warranty, use the following:	
Claim Type:	W2
Part Identifier:	9175
Damage Code:	9175 40 ___ * 2
Labor Operation: Front Bumper Removal/Installation	63291900 = 90TU
Labor Operation: Rear Bumper Removal/Installation	63691900 = 110 TU
Labor Operation: All Front Sensors and Boot	91751999 = 20 TU
Labor Operation: All Rear Sensors and Boot	91752099 = 20 TU
Diagnostic Time:	No Additional Diagnostic Time Allowed
Claim Comment: Input "As per Technical Bulletin 2014428" in comment section of Warranty Claim.	

* Code per warranty vendor code policy.

Required Parts and Tools

Description	Part No:	Quantity
Boot Kit	3C0998277	1
Connector	3C0973203	1-8
Terminals	000979034	1-24

Additional Information

All part and service references provided in this Technical Bulletin are subject to change and/or removal. Always check with your Parts Dept. and Repair Manuals for the latest information.