

# Technical Bulletin



Model(s)	Year	Eng. Code	Trans. Code	VIN Range From	VIN Range To
Passat, Passat Wagon	2006 - 2008	All	All	All	All

## Condition

91 08 03 Mar. 26, 2008 2017501

Radio Cuts Out While Driving

Radio or Bass cuts out intermittently while driving. Radio may or may not return to normal operation.

## Technical Background

Power supply splice B219, located under the driver's seat and routed to radio amplifier, may have corrosion due to excessive water saturating carpet and entering splice.

## Production Solution

No production change required.

## Service

EXAMPLE



Figure 1

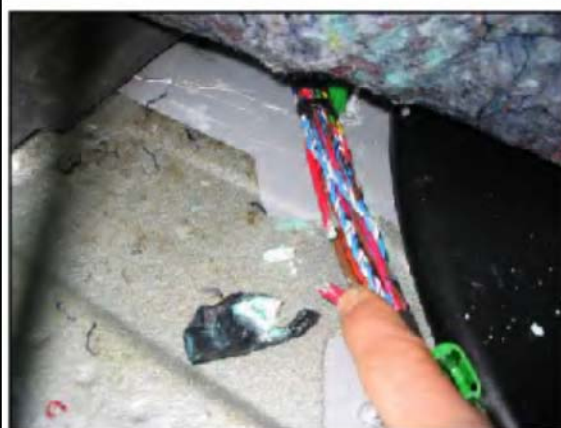


Figure 2

# Technical Bulletin



- Remove driver seat, see Repair Manual Group 72 Seat Frames, in ElsaWeb.
- Remove driver sill panel, see Repair Manual Group 68 Interior Equipment, in ElsaWeb.
- Pull back carpet to expose wire harness, see Figure 1.
- Verify corrosion in wire splice similar to, or as shown in Figure 2.
- Repair splice using Wiring Harness Repair Kit Part No. VAS 1978 A, see Repair Manual Group 97, Wiring, in ElsaWeb.



Tip:

If no damage is found with the wiring harness splice, continue with normal diagnostics.

## Warranty

To determine if this procedure is covered under Warranty, always refer to the Warranty Policies and Procedures Manual <sup>1)</sup>					
Model(s)	Year(s)	Eng. Code(s)	Trans. Code(s)	VIN Range From	VIN Range To
Passat, Passat Wagon	2006 - 2008	All	All	All	All
Claim Type:		Use applicable Claim Type <sup>1)</sup>			
SAGA Coding					
Service Number:	Damage Code	Damage Location (Depends on Service No.)		Parts Manufacturer (removed part)	
9709	0015	Use applicable when indicated in ElsaWeb (L/R)		---- <sup>2)</sup>	
Labor Operation <sup>3)</sup> : Sill Panel Trim, Remove+Reinstall		66291900 = 20 TU			
Labor Operation <sup>3)</sup> : Front Seat Remove+Reinstall - No Power Seats		72011700 = 30 TU			
Labor Operation <sup>3)</sup> : Front Seat Remove+Reinstall – With Power Seats		72011910 = 50 TU			



# Technical Bulletin



Labor Operation <sup>3)</sup> : Central Wiring Harness Repair - For 1 Cable	97094151 = 30 TU	
Diagnostic Time <sup>4)</sup>		
GFF Time expenditure	01500000 = XX TU max.	NO
Road Test	01210002 & 01210004	NO
Technical Diagnosis	0132xxxx = XX TU max.	NO
Claim Comment: Input "As per Technical Bulletin 2017501" in comment section of Warranty Claim.		
1) Vehicle may be outside any Warranty in which case this Technical Bulletin is informational only 2) Code per warranty vendor code policy. 3) Labor Time Units (TUs) are subject to change with Elsa updates. 4) Documentation required per Warranty Policy & Procedures Manual.		

## Required Parts and Tools

No Special Parts required.

Tool Description	Tool No:
Wiring Harness Repair Kit	VAS 1978A

## Additional Information

All part and service references provided in this Technical Bulletin are subject to change and/or removal. Always check with your Parts Dept. and Repair Manuals for the latest information.

