

Technical Bulletin



Model(s)	Year	Eng. Code	Trans. Code	VIN Range From	VIN Range To
Passat, Passat Wagon	2006 - 2007	All	All	All	All

Condition

46 08 04 July 31, 2008 2017924

After Installing a New Parking Brake Switch, Electronic Parking Brake, Does Not Respond, Warning Light On

One or more of the following fault code entries are logged in the electronic parking brake system:

Code	Description
02443 008	Control Panel Implausible Signal
02443 012	Control Panel Electric Fault in the Circuit
01299 004	Diagnosis Interface for Data Bus No Signal
01487 008	System Test Implausible Signal



Tip:

After installing a new parking brake switch, fault memory cannot be deleted.



Note:

Condition as described does not affect parking brake operation.

DO NOT replace EPB control module for this condition.

Technical Background

A failure of the electronic parking brake switch can lead to a software problem in the EPB control module even after a switch replacement.

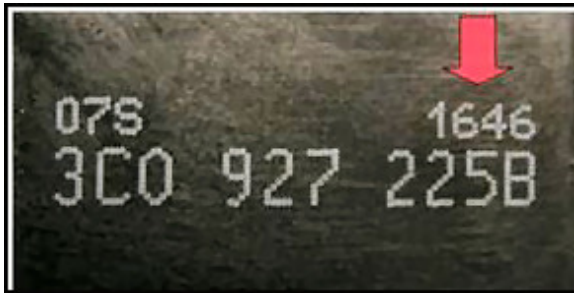
Production Solution

Generation III EPB from week 22/07.

Technical Bulletin



Service



A new switch from production date -2606- must be installed, see figure 1.

The production date is located on the switch above part number.



Tip:

First three numbers (164) show production day and last number (6) is the year.

Figure 1

- Perform a terminal 30 reset of EPB control module.

Proceed as follows:

- Switch ignition OFF.
- Disconnect battery.
- Wait at least 10 seconds and reconnect battery.
- Switch ignition ON.
- **While pressing brake pedal**, operate electronic parking brake twice.
- Read fault memory. Faults should be sporadic and therefore possible to delete.
- Delete fault memory

Technical Bulletin



Warranty

To determine if this procedure is covered under Warranty, always refer to the Warranty Policies and Procedures Manual ¹⁾					
Model(s)	Year(s)	Eng. Code(s)	Trans. Code(s)	VIN Range From	VIN Range To
Passat, Passat Wagon	2006 - 2007	All	All	All	All
Claim Type:		Use applicable Claim Type ¹⁾			
SAGA Coding					
Service Number:	Damage Code	Damage Location (Depends on Service No.)	Parts Manufacturer (removed part)		
4662	0040	Use applicable when indicated in ElsaWeb (L/R)	--- ²⁾		
Labor Operation ³⁾ : Replace Brake Switch, includes terminal 30 reset		46621900 = 20 TU			
Diagnostic Time ⁴⁾					
GFF Time expenditure		01500000 = XX TU max.		YES	
Road Test		01210002 & 01210004		NO	
Technical Diagnosis		0132xxxx = XX TU max.		NO	
Claim Comment: Input "As per Technical Bulletin 2017924" in comment section of Warranty Claim.					
¹⁾ Vehicle may be outside any Warranty in which case this Technical Bulletin is informational only ²⁾ Code per warranty vendor code policy. ³⁾ Labor Time Units (TUs) are subject to change with Elsa updates. ⁴⁾ Documentation required per Warranty Policy & Procedures Manual.					

Technical Bulletin



Required Parts and Tools

Part Description	Part No:	Quantity
Parking Brake Switch	3C0927225B REH	1

Tool Description	Tool No:	Quantity
VAS Diagnostic Tool (with Base CD V.12.00 and the Brand CD V.12.83.01 or higher)	VAS 5051 / 5052	1
Midtronics Battery tester/charger	InCharge 940 (INC-940)	1

Additional Information

All part and service references provided in this Technical Bulletin are subject to change and/or removal. Always check with your Parts Dept. and Repair Manuals for the latest information.